



## SPECIAL PURPOSE SYSTEMS FOR BOOK BINDING

for finishing of Hard-cover/Perfect-Bound Books, Diaries Dictionaries & Directories etc.

### Smashing & Nipping Press

Smashing is the process of compressing and removing the air from the folds and flattening of the Overall area of the Book-Blocks. Smashing strokes can be set in multiples to suit the compacting requirement for the desired rectangular shape. After the Smashing cycle the Book-Block is held firmly and Nipping operation follows for knocking out the excessive swell in the spine. Book-Block should be rectangular in shape and free from extreme gradients in the folded sewn area for quality & enhanced life of the BOOK.

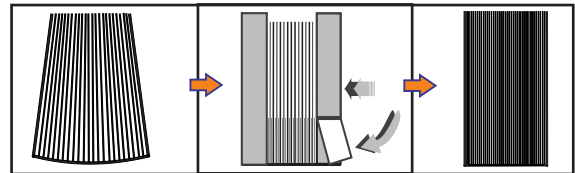


Smashing strokes (*adjustable*) – from one to nine with two Nipping strokes, timing set in increments of 0.1 Seconds through the PLC (*Programmable Logic Controller*). The Smashing and Nipping hydraulic pressure is adjustable. Production speed of 600 to 700 Books (*single Book of 30mm spine thickness*) per hour can be achieved.

Some of the other operator friendly features on the PLC are Manual & Semi-Auto option & Counter for number of Books processed. Dedicated Switches for Clamping (*Smashing*) and Nipping functions provided on the control Panel. Emergency and Recycle Push-buttons are located conveniently on the Top Cover. For operator's safety: both the Push-Buttons need to be pressed simultaneously and Emergency Switch aborts the cycle immediately in case of an accident. Safety Curtain (*sensor-based*) is incorporated for operator's protection. The Smashing (*Clamping*) / Nipping operation is instantly aborted on breach of the Safety Curtain. This feature is a foolproof measure to protect the operator from any accident etc.

The high speed blower / exhaust fan ensures the ambient temperature in the Power Pack Area is maintained for optimum efficiency and extended life of the parts & equipment.

Optional Pressure Plates to suit Book-Height in excess of 220mm, can be supplied on request. Pressure Plates of size 130mm, 180mm, & 220mm are part of the standard accessories. Power saving feature ensures the motor switches off after a pre-set delay time (*incase the Recycle Switches are not reactivated*). PLC based system for optimum reliability & simplified diagnostics. Castors for maximum mobility.



#### Technical Specifications

Description	Unit	SNP41	SNP46
Book Block Size-Spine Width (Max)	mm	410	460
Book Spine Thickness (Min-Max)	mm	20-110	20-110
System Clamp Pressure (Adjustable upto)	kgs	5000	6000
Nipping Pressure (Adjustable upto)	kgs	3000	3500
Electrical Load / Motor	kw/HP	2.25/3	2.25/3
Electrical Supply		380/415V AC 50Hz 3Ph	
Hydraulic Oil Capacity	ltrs	35	35
Overall Dimension (WxDxH)	cms	73X119X96	79x119x96
Net Weight (Approx.)	kgs	720	780



Bundling Press



Nipping Press



Book Spine Pre-Gluer



B B Rounding & Backing



B.Three Side Trimmer



Twin Corner Cutting-II

JOY'S experience and knowledge of book-binding acquired in the past two decades is reflected in the competence, quality standards, using indigenous inputs and dedication in search of new solutions for producing excellent finished books, magazines and stationery items through the most economical means.

Smashing & Nipping Press